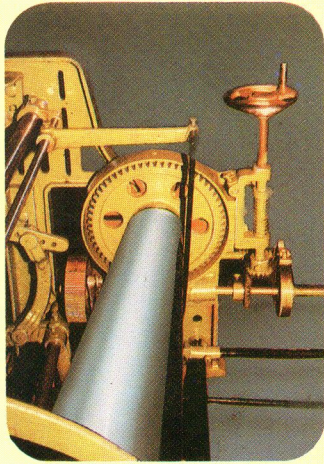


### ● BEATING :

An improved fast reed systems of beating is incorporated in the loom which ensures stable flight of the shuttle and correct beating of the weft. The sley is carefully made from selected good quality of seasoned Teak wood with shisham wood race board fitted with polished sley cap. For longer life and heavy quality of fabrics the steel sley may also be supplied at extra cost.

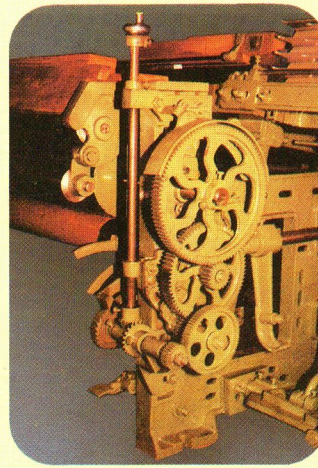
### ● SHEDDING :

Double treadle and cone pully type shedding system is provided which is suitable for Plane weaving, Jacquard weaving and dobby with 24 shafts.



### ● LETTING OFF :

The letoff systems is of two types, 1. Attached frame type where the area is limited and 2. Seperate frame type. The positive seperate type of letoff system ensures uniform letoff speed and uniform warp tension



### ● TAKING UP:

The take up motion incorporates pickle's indirect 7 wheels take up motion with ratchet wheels. The system performs accurate take up motion even at high pick weaving. The change gears is such that one tooth corresponds to one pick.

### ● DRIVING:

Driven by the individual motor drive through 18" Dia V-belt pully which has its own flywheel effect and hence the light touch on handle will start the loom with perfect smoothness.

### ● PICKING:

The unique centre picking is adopted for smooth and uniform working even at high speed operation. The mechanism is so designed as to ensure Longer life for shuttle, pickers and picking stick.

## SPECIFICATIONS

1. Nominal Reedspace : 46" , 54" , 59" , 64" , 68" , 72"
2. Reed : Fast Reed
3. Shuttle Box : 1 x 1, 2 x 1, 4 x 1, 4 x 4, 2 x 2
4. Pick : Underpick
5. Shedding : Treadle & Cone pully type
6. Drive : Individual Motor drive
7. Power required : 0.5 HP, 720 RPM, 440 V, 50 c/s 3 phase
8. Handle : Right or left
9. Letoff motion : Fully Automatic positive letoff motion to keep uniform tension
10. Take up : The pickle's indirect 7 wheel take-up motion with ratchet wheel system.

## SPECIAL FEATURES

1. The complete frame of loom is fitted with the dowell pin at different joints of binders, Crank bearing and Tappet bearing in order to facilitate foolproof alignment while erection of the loom.
2. High grade castings is used to give longer life to the components.
3. Self-lubricating bushes for crank & tappet shaft bearing which eliminate frequent oiling.
4. Picking nose and picking bowl made up of special quality metal to give longer life.
5. Hob-cut gears to give smooth and noiseless working & uniform quality of fabrics.
6. The overall perfect workmanship using latest machining techniques, Jigs & Fixtures to give best performance of the entire loom.
7. Above all prompt and efficient after sales services.



## PREMIER LOOMS MANUFACTURERS PVT. LTD.

M. G. Road No.11, Udyog Nagar, Udhna – 394 210 (Surat).

Ph. : +91-261-2278491, 2279312, 2270944. Fax : : +91-261-2277209

E-mail : [premierlooms@hotmail.com](mailto:premierlooms@hotmail.com) [info@premierloom.com](mailto:info@premierloom.com)

[www.premierloom.com](http://www.premierloom.com)